

Southern Oregon Rare and Precious Metals LLC

1188 Idaho Ave, Coos Bay, Oregon. 97420

Phone: 541-297-6102

rokxter@gmail.com, earth.1st.rpm@gmail.com

5/24/2017

GoodMark Capital Group, INC.

103 E Adkins St, Seagoville, TX 75159

Attn: Mark Bacon

Mark, the following report will be a brief as I can make it. It will cover the development activities performed at the Oro group of Mining claims in April and May up to this point.

These activities included surveying, mapping, staking and sampling with subsequent fire assay and flotation concentration tests. The activities have been ongoing since April 6th of this year.

The first trip April 6th through 10th to the mine site yielded several positive outcomes:

- Surveying and staking of 25 new mining claims with a total acreage of just under 508 acres.
- Location and discovery of several thousand additional tons of ore reserves associated with many of these claims.
- Discovery of additional potential ore reserves just off the boundary of the claim group to the east.
- The average assay value of just over 1 ounce of gold per ton and 3 ounces of silver per ton from the samples taken indicates many tons of higher ore grades are available for processing.
- The most exciting find was the Sulfide group of 4 claims, with an estimated additional ore reserve of 5000 tons...more on that later.
- Assays (see below) from the samples of these ore reserves indicate a potential doubling of the volume of ore to be processed at GoodMark's future milling facility.

Assay Results for the 8 samples taken on 4/8/2017

Bead Size	%AU/AG	Gold opt	Location
10 mg	30/70	3 opt	Upper Sulfide
.26 mg	85/15	.2 opt	Lower Sulfide
2.5 mg	35/65	.9 opt	North Sulfide
3.79 mg	35/65	1.3 opt	East Margarita middle
1.45 mg	85/15	1.2 opt	East Margarita upper
1.77 mg	50/50	.85 opt	East Margarita lower
4.69 mg	30/70	1.5 opt	West Margarita lower
1.45 mg	80/20	1.15 opt	West Margarita upper
1.6 mg	70/30	1 opt	Dust sample

The second trip May 11th through 14th yielded positive outcomes as well:

- Surveying and staking of 2 additional claims covering the newly discovered “Hilltop Mine” workings.
- Location of the Brick Mine ore reserve. We met an old local miner and discussed mine history in the area. He has lived in the area most of his 80 plus years and had worked for the last drilling crew to core drill on the Margarita Mine. In our conversation, he gave us the location of the mined but never processed ore from the Brick Mine (part of your Oro group). We located and filed on this 10,000 plus ton ore reserve that was just off the Oro group northern boundary. He indicated that there is over 1 million ounces of silver in this ore reserve. We can’t substantiate that yet. But initial assays from this ore are very positive.
- With the reduced water level in the adit west of Japanese Tank we sampled the ore body and sidewall.
- We also identified several potential mill sites for the location of the pilot and future production mills.
- Reposting of better and more accurate maps, and printed instead of hand written location notices on the 25 claims staked previously.
- Discovery of several additional adits on the older claims and one more ore reserve at the east margarita location
- Additional sampling of new potential reserves. See the assay results below.

Head ore and flotation and Assay tests 5/20/2017

Sample	Bead size	Silver/Gold	Gold value	Silver value
Japanese Tank 1, r wall high grade	4.7 mg	90/10	.47 opt	3.23 opt
Japanese Tank 2	.5 mg	20/80	.4 opt	.1 opt
Japanese float concentrate (poor flotation)	1.6 mg	30/70	.5 opt	1 opt
Hilltop ore	3.5 mg	30/70	2.5 opt	1 opt
Hilltop float concentrate very clean	14.3 mg	70/30	4.3 opt	10 opt
Upper Sulfide	1 mg	.05/.95	.95 opt	.05 opt
Upper Sulfide float concentrate	118.6 mg	95/5	6 opt	112.6 opt
Retest of Upper Sulfide flotation concentrate with different flux	60 mg	90/10	6 opt	54 opt
Upper Sulfide Head Ore Retest	9.5 mg	40/60	5.7 opt	3.8 opt
Brick Head Ore test 2	2.75 mg	30/70	1.925 opt	.825 opt
Brick Head Ore	6.5 mg	90/10	.65 opt	5.85 opt
Brick float concentrate	4.5 mg	90/10	.5 opt	4 opt

In the interim between onsite activities we have prepped the ore for shipment to Met-Solve in Canada. The testing they will perform will be for flotation, gravity concentration and mineral scoping. After conversations with their head metallurgist and Aaron Bazzanaj, the metallurgist assigned to your ore testing we have determined what we believe to be the most cost effective course for necessary testing. This testing is to determine the best grind size and best chemicals to use in the flotation process, and any other marketable metals present. They will also determine if there are elements present in the ore that would either interfere with recovery or add penalties charges when the ore concentrates are sold. There are many factors to consider in building the mill to process ore. The results from this testing will enable us to equip the plant from the very start with the correct milling and processing equipment for maximum returns.

We have retested several samples and you can see some of the results in the charts above. We have run the sulfide ore flotation tests a third time with several pounds from each of the different ores reserves at the Sulfide group to determine an overall recovery average. This retest is below. Note: The last test of the Sulfide group shows the presence of platinum group metals or some other rare earth element.

Re-test of East Margarita and Sulfide Ore Reserves

LOCATION	BEAD SIZE	ESTIMATED % s/g	Gold Value	Silver Value
East Margarita 1	2.1 mg	80/20	.42 opt	1.7 opt
East Margarita 2	1.1 mg	70/30	.33 opt	.77 opt
Sulfide Mix 1	2.1 mg	70/30	.63 opt	1.47 opt
Sulfide mix 2	3.8 mg	65/35	1.33 opt	2.47 opt
Sulfide Mix Flotation Concentrate 2x sample	140 mg	85/15	10.5 opt of concentrate	59.5 opt of concentrate

The Sulfide Group of claims is an incredible find. Every test is consistent and consistently good. This claim group is profitable even with only the silver values considered. We are currently in the process of producing for GoodMark Capital Group, INC. its first dore bar from the concentrates derived from 100 pounds of head ore. The bar will be mostly silver but large enough to hold in your hand.

Looking forward, we anticipate a total ore reserve of well over 20,000 tons based upon the reserves of the Brick Mine, Sulfide Group, Hilltop Mine, East Margarita, and the Margarita Mine. There are other reserves yet to assayed along with the corresponding volumes of ore to be determined and added to this total.

The next step will be to sample and test the Brick Mine reserve more thoroughly, and to begin sighting and site preparation for the processing facility. We will also need to sample the "Spanish Adit" pile and do additional testing of the Sulfide Group for the presence of platinum group metals and rare earth metals. We will continue sourcing equipment for the processing plant and to begin the permitting of the mill and reclamation phases.

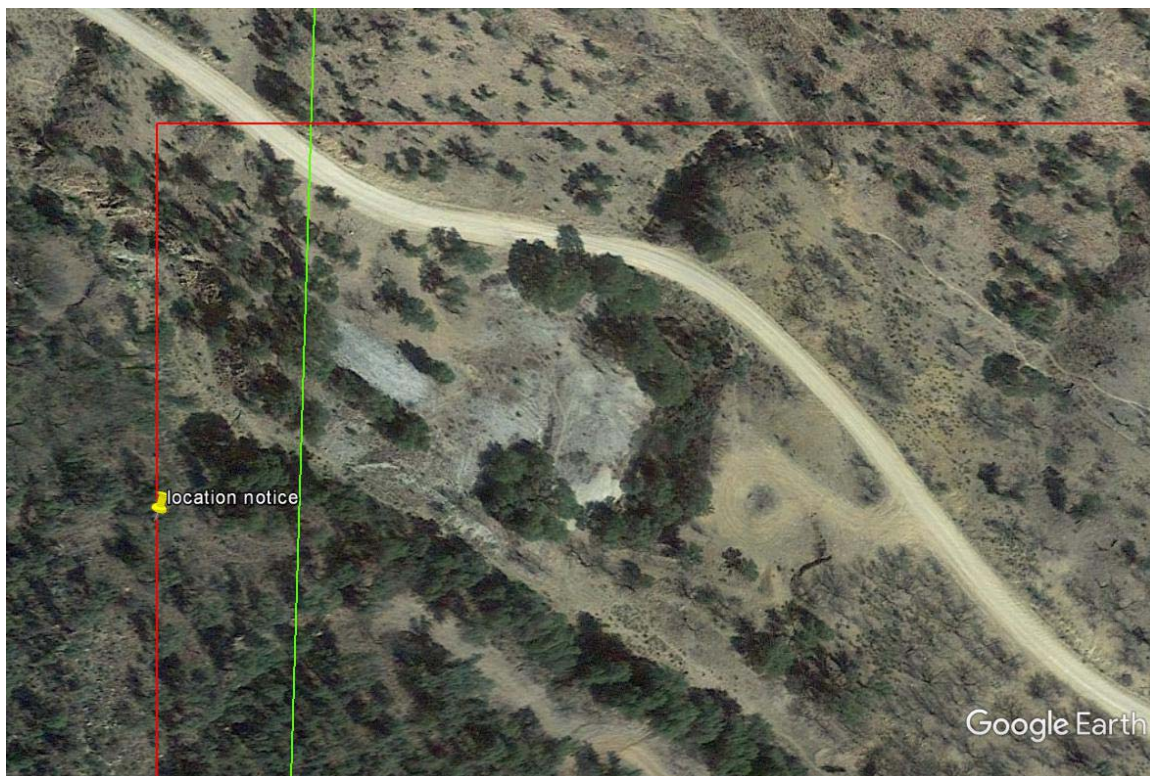
I am excited about the future of this GoodMark Capital Group, Inc. Project!

Richard Cummings
CEO Southern Oregon Rare and Precious Metals

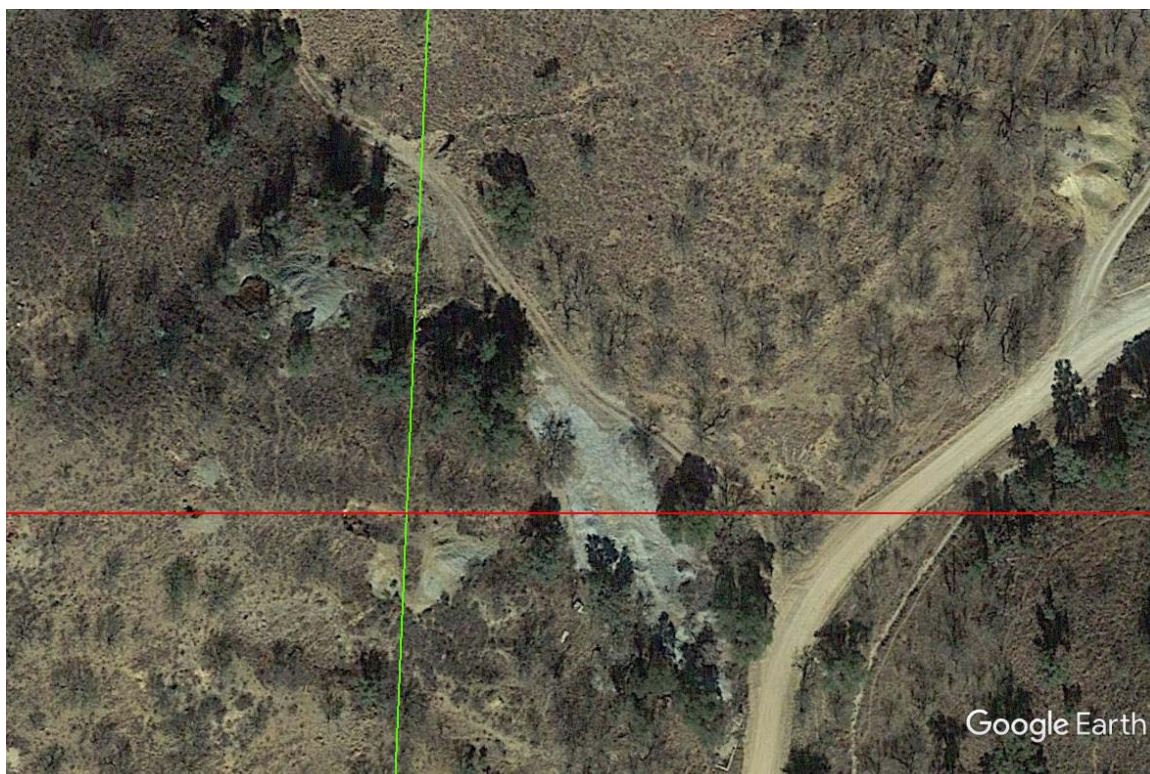
See the attached pictures of ore and assays from the ore reserves.



Margarita Tank Adit Left Wall



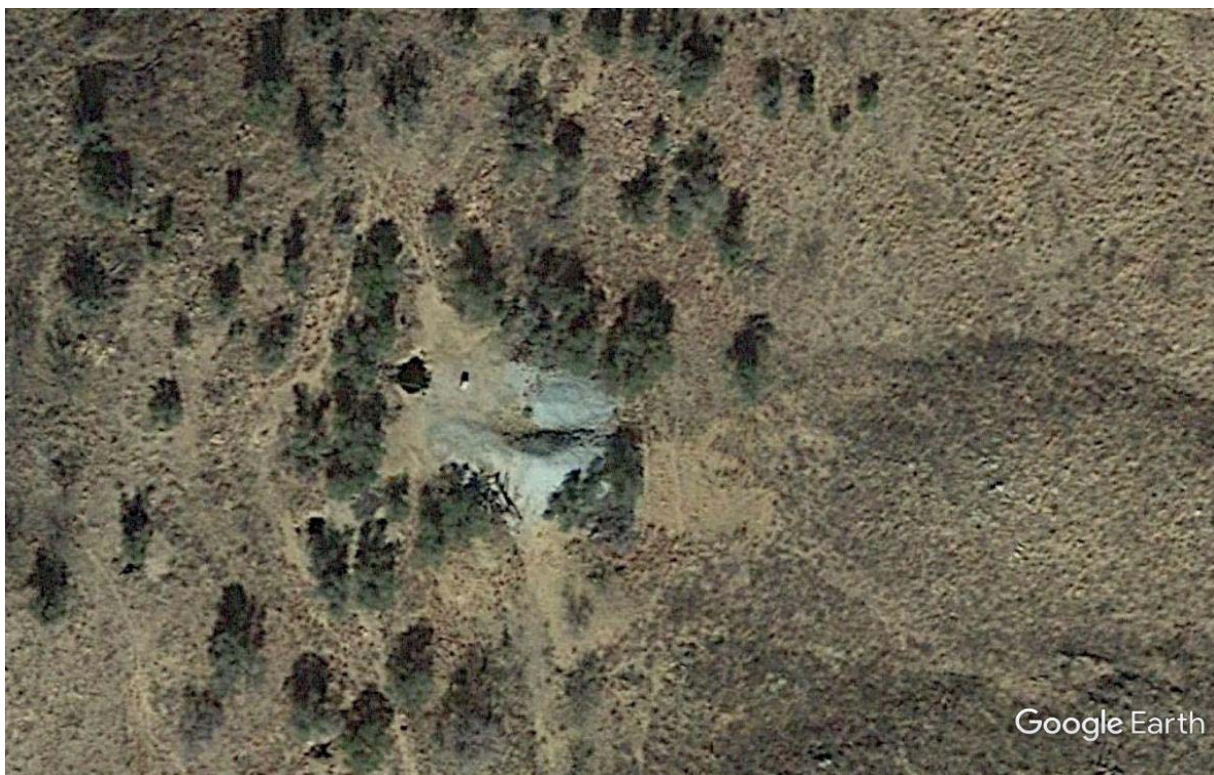
Brick Mine Head Ore Stockpile Deposit NOTE: Raw Ore Not Tailings



Upper Sulfide-Top Left, Lower Sulfides Bottom left and Middle, East Sulfide right. NOTE: These are Head Ore Piles Not Tailings.



Hilltop Head Ore Pile NOTE: These are unprocessed stockpiles not tailings.



Hilltop Head Ore Pile NOTE: Unprocessed Raw Ore Not Tailings.







Flotation



Flotation



Flotation





Crushed Ore



Uncrushed Ore



Panning Main Margarita Raw Ore at Margarita Tank To Test Free Milling Gold Content



Collecting Ore From Main Margarita To Pan Sample



Running Hand Held Electro Magnetic Pin Pointer To Look For Mineral Concentrations



Voids Such As Adits And Underground Drifts Show As Blue And Metals Concentrations Show As Red



Margarita Main Adit Area



Crew Members Order L to R - Calvin, Matt, Rocky And Richard "Rocky" Cummings



Japanese Tank Area Adit



Upper Sulfide Adit



Running Lines And Staking



Mapping Claims And Placing Location Data (Paper Hanging)



Stake And Location Data



Lower Sulfide Raw Ore Pile Close-up



Lower Sulfide Raw Ore Pile (That Is A 3/4 ton Crew Cab Truck On It For Scale)



Lower Sulfied Raw Ore Pile From Ruby Road



Lower Sulfide Raw Ore Pile From Top



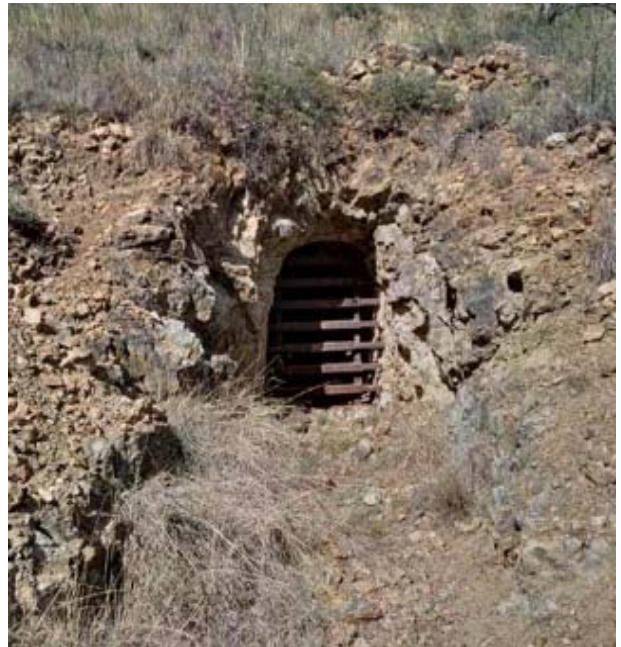
Upper Sulfide Adit Cover



Brick Mine Adit



Upper Sulfide Raw Ore Pile



Lower Sulfide Adit



Brick Mine Adit



Brick Mine Raw Ore Pile From Top (Christina At Bottom For Scale)

Assay Results for the 8 samples taken on 4/8/2017

Location	Bead Size	%AU/AG	Gold opt
Upper Sulfide	10 mg	30/70	3 opt
Lower Sulfide	.26 mg	85/15	.2 opt
North Sulfide	2.5 mg	35/65	.9 opt
East Margarita mid	3.79 mg	35/65	1.3 opt
East Margarita up	1.45 mg	85/15	1.2 opt
East Margarita low	1.77 mg	50/50	.85 opt
West Margarita low	4.69 mg	30/70	1.5 opt
West Margarita up	1.45 mg	80/20	1.15 opt
Dust Ave	1.6 mg	70/30	1 opt

ORO GOLD MINE 2017 ASSAY TESTING RESULTS

NEW ORO GOLD MINE AND SULFIDE CLAIMS STOCKPILED ORE ASSAY AVERAGES 4-8-17

#	Location	Bead Size (mg)	% AU	% AG	Gold opt
1	Upper Sulfide	10	30	70	3
2	Lower Sulfide	0.26	85	15	0.2
3	North Sulfide	2.5	35	65	0.9
4	East Margarita mid	3.79	35	65	1.3
5	East Margarita up	1.45	85	15	1.2
6	East Margarita Low	1.77	50	50	0.85
7	West Margarita Low	4.69	30	70	1.5
8	West Margarita Up	1.45	80	20	1.15
9	Dust Average	1.6	70	30	1
Averages		3.06	55.56	44.44	1.23

HEAD ORE AND FLOTATION AND ASSAY TESTS 5-20-17 (PLUS AVERAGES)

#	Location	Bead Size (mg)	% AG	% AU	Gold opt	Silver Opt
1	Japanese Tank 1, r wall high grade	4.7	90	10	0.47	3.23
2	Japanese Tank 2	0.5	20	80	0.4	0.1
3	Japanese Float Concentrate (poor flotation)	1.6	30	70	0.5	1
4	Hilltop ore	3.5	30	70	2.5	1
5	Hilltop float concentrated very clean	14.3	70	30	4.3	10
6	Upper Sulfide	1	0.05	0.95	0.95	0.05
7	Upper Sulfide float concentrate	118.6	95	5	6	112.6
8	Retest of Upper Sulfide flotation concentrate with different flux	60	90	10	6	54
9	Upper Sulfide Head Ore Retest	9.5	40	60	5.7	3.8
10	Brick Head Ore test 2	2.75	30	70	1.925	0.825
11	Brick Head Ore	6.5	90	10	0.65	5.85
12	Brick Float Concentrate	4.5	90	10	0.5	4
Averages		18.95	56.25	35.50	2.49	16.37

RETEST OF EAST MARGARITA AND SULFIDE ORE RESERVES 5-20-17 (PLUS AVERAGES)						
#	Location	Bead Size (mg)	% AG	% AU	Gold opt	Silver Opt
1	East Margarita 1	2.1	80	20	0.42	1.7
2	East Margarita 2	1.1	70	30	0.33	0.77
3	Sulfide Mix 1	2.1	70	30	0.63	1.47
4	Sulfide Mix 2	3.8	65	35	1.33	2.47
5	Sulfide Mix Flotation Concentrate 2 x sample (estimated 60 to 1)	140	85	15	10.5	59.5
Averages	1-4 and 5 divided by 60 then divided by 5 samples	2.29	74.00	23.00	0.58	1.48

	Bead Size (mg)	% AG	% AU	Gold opt	Silver Opt
COMBINED AVERAGES (BEAD SIZE, %AG, % AU AND GOLD OPT 4-8-17 AND 5-20-17 TESTS), (SILVER OPT 5-20-17 TESTS ONLY)	8.10	58.23	38.02	1.43	8.93